

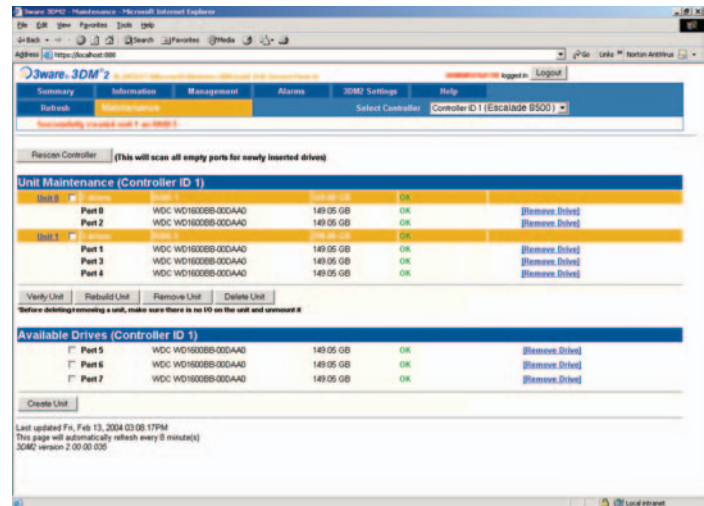


3DM[®] 2

Disk Management Software

Benefits

- Displays drive and RAID array status
- Remote configuration of new arrays
- Hot swap management and monitoring of failed drives
- Array rebuild pacing and scheduling
- HTML-based user interface ensures cross platform consistency
- Email and log notifications of disk array events such as degrade or error conditions
- Included with all 3ware 9000 Series controllers



3ware[®] 9000 Series of Serial ATA hardware RAID controllers includes powerful remote management software that simplifies the configuration, management and monitoring of 3ware storage arrays as well as single disks used for JBOD configurations. 3DM 2 provides the graphical front-end for 3ware's storage management software. Implemented using C++, HTTP over SSL, HTML and JavaScript, 3DM 2 is actually a dedicated secure HTTP server implementation that provides a robust, secure array management environment for your RAID protected data.

Remote Creation, Management and Monitoring with 3DM 2

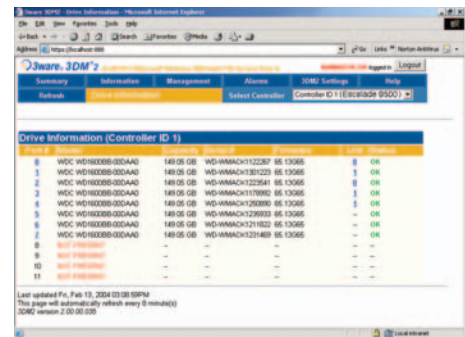
3DM 2 provides an intuitive interface to remotely create, manage and monitor your 3ware RAID arrays and single disks. Robust self-monitoring technologies and automatic notification services will maximize your storage availability while minimizing the pressure on system administrators. In the event of a hardware failure, 3DM 2 can automatically notify you via email, pager or email-capable cell phone — letting you stay in touch with your storage deployment and resolve issues whether you're across the country or in your own local IT shop. System status reports are available by email, daily or weekly.

Array Monitoring

3DM 2 is designed to provide continual visual feedback for local monitoring. In the event of a controller or disk failure, the alarm system is triggered and events will be exported to your email or email-capable devices. When 3DM 2 is invoked a configuration file is read to learn about various server settings such as Email Relay, Port number, etc. The server sets up the environment in anticipation of HTTP requests and/or runs as a Logger, extracting 3ware event messages and writing them to files.

Web-based for Convenience

At 3DM 2's core is an embedded web server using HTTP to serve up the drive and array status, error log, and configuration pages. Due to the software's browser-based user interface, you can manage your storage from wherever you have



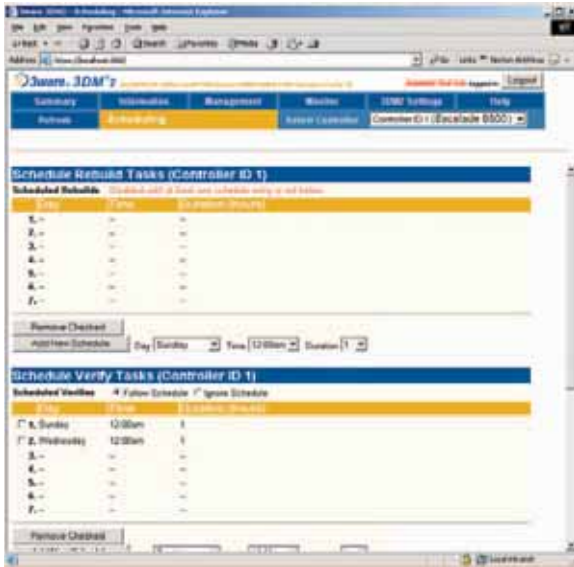
3DM 2 provides drive status reporting from any network client with Internet access

network access with a browser, without installing software on the remote system. 3DM 2 offers a multi-tiered password protection system to allow access to those who really need it and to provide a minimal read-only view for others. This prevents unauthorized access to your storage, ensuring the security of your stored data.

Remote Management for High Availability

3DM 2 software allows for hot swap and hot spare configurations ensuring data availability and greater manageability. While your system is active, failed drives can be hot swapped and arrays can be configured and managed remotely. The array can be rebuilt immediately or scheduled for a time when the system is less busy. The percentage of controller CPU devoted to the rebuild can be adjusted to minimize the impact to overall system performance.

3DM[®]2



3DM2 provides priority and schedule array maintenance for maximum system uptime

Software Portfolio

- 3ware Disk Manager 2 (3DM2)
 - Browser-based storage management tool
- Command Line Interface (CLI)
 - Full featured command line interface product to meet manufacturing and non-GUI platform requirements
- Application Programming Interface (API)
 - Documented interface for custom integrated management tools
- Operating System Support
 - Windows 2003/XP/2000*
 - Linux Kernel*
 - FreeBSD*

Manageability

- Configure, manage and monitor key elements of your 3ware storage solutions with 3DM2's tools and utilities

Fault Management

- S.M.A.R.T (Self Monitoring Analysis and Reporting Technology) reporting of drive statistics

I/O Management

- Configurable event notification and alerts via e-mail or email-enabled phone
- Event logging and filtering

Client Features

- Configure, monitor and manage 3ware disk array units
- Set controller parameters

Monitoring Functions

The 3DM2 Server component collects and disseminates information on disk array status and resources reducing your unplanned downtime and minimizing disruption of your daily business operations. The 3DM2 Client component organizes this information through an intuitive display. Errors and events are recorded in a log file and displayed in the 3DM2 ALARMS page. If a problem is serious enough to warrant immediate attention, operators can be alerted via notification applications such as e-mail.

Maintenance and Management Functions

The 3DM2 Client provides an interface into the management and maintenance of individual disk arrays and single disks. Scheduling background tasks via the management page provides a simple and seamless interface to complex background functions, such as rebuilds and array verification.

Server Requirements

- A PC with a 500 MHz Pentium[®] III (or higher) processor; at least 256 MB of system memory, a CD-ROM drive.
- Microsoft[®] Windows[®] 2003/XP/2000
- Red Hat[®] Linux with kernel 2.4.x or later on x86 platforms
- Red Hat Linux with kernel 2.6.x or later on 64-bit AMD platforms
- Red Hat Enterprise Server
- SuSE[®] Linux
- FreeBSD

Client Requirements

- A PC capable of supporting one of the following browsers
 - Internet Explorer 5.5 and above
 - Netscape 7.0 and above
 - Mozilla 1.2 and above

3ware RAID Management Extras

- Command Line Interface (CLI) — a full-featured RAID management product that meets manufacturing and non-GUI platform requirements. It allows configuration and management access to 3ware storage products via host operating system command line prompts.
- 3ware BIOSManager (3BM) — A pre-OS BIOS array configuration utility that allows multiple array configurations from a single BIOS interface.

Compatibility

- * For operating system support and drivers go to: <http://www.3ware.com/support/OS-support>

Distributed By:



For more information on 3ware products

Please call (800) 726-2477

ThinkCP[™] Technologies • 16812 Hale Avenue Irvine, California 92606
 Toll Free: (800) 726-2477 • Phone: (949) 833-3222 • Fax: (949) 833-3389
www.thinkcp.com • sales@thinkcp.com